



As a welcoming and caring Christian community, we prayerfully seek to share God's love and joy with everyone

Mill Woods Presbyterian Church

2026 Congregational Profile



780-462-2446



www.millwoodspresbyterian.org



6607 31 Avenue NW
Edmonton, Alberta

Table of Contents

Greetings from the Search Committee:.....	3
Contact Information for the Interim Moderator.....	3
Recent Church History and Congregation Characteristics.....	4
Who We Are.....	6
Mission Statement.....	6
Our Vision.....	6
Our Values.....	7
Groups and Programs – Our Service.....	9
Pastoral Care.....	9
Christian Education and Youth Ministries.....	10
Mission.....	12
Worship Life.....	14
The Ladies Guild.....	15
Session.....	15
Building and Property.....	16
Finance.....	18
Financial Profile.....	18
Financial Statements for 2024.....	18
Ministry at Mill Woods.....	19
Pastoral Skills and Interests Inventory.....	19
Feedback from our Children.....	20
Congregational Children’s Survey.....	20
Minister’s Position Description.....	21
Compensation.....	22
Additional Benefits.....	22
Additional Positions Within Our Church.....	23
Previous Ministers.....	23
About Edmonton.....	24
Mill Woods.....	27
Our Final Message.....	27

Greetings from the Search Committee

Dear Interested Candidates:

Mill Woods Presbyterian Church (MWPC) invites you to review our Congregational Profile and give prayerful consideration to an application for the position of Minister of Word and Sacrament.

The Minister we are seeking will be an integral part of our vibrant, welcoming, and wonderfully diverse congregation. Journey with us as we continue to grow our vibrant congregation through spiritual leadership.

Mill Woods Presbyterian Church prides itself on being culturally and ethnically diverse, where people work together in harmony to make a church home. Our congregation boasts adherents and members across a wide spectrum of ages, making it important that our Minister be a life-long learner in youth engagement and ministering to our elderly members. To ensure that we value and protect all our congregants, we are Leading with Care compliant.

Should our profile speak to you please contact our interim moderator whose information is noted below.



Contact Information for the Interim Moderator

All inquiries and applications can be directed to the Interim Moderator: **The Rev. John Dowds**

Address: 6607 – 31 Ave. NW
Edmonton, AB.
T6K 4B3

Phone: 780-441-1678

E-Mail: jfkdowns@gmail.com

Recent Church History and Congregation Characteristics

In 2014, Strathcona and Mill Woods Presbyterian churches amalgamated to form one congregation under the Mill Woods name and since then have moved forward together with a common vision as one group. Many upgrades to our church building –built in 1986–have been funded from the money acquired through the sale of the Strathcona Church building. This year, 2026, we will be celebrating 40 years of worshipping and growing together in Christ in our current church building.

Our congregation is currently made up of 117 members, with an additional 68 adherents and children. The pie chart below shows the approximate age distribution of our congregation. Table 1 on the following page provides an overview of the professional backgrounds of our members and adherents.

Age-Group Distribution at Mill Woods Presbyterian Church (MWPC)

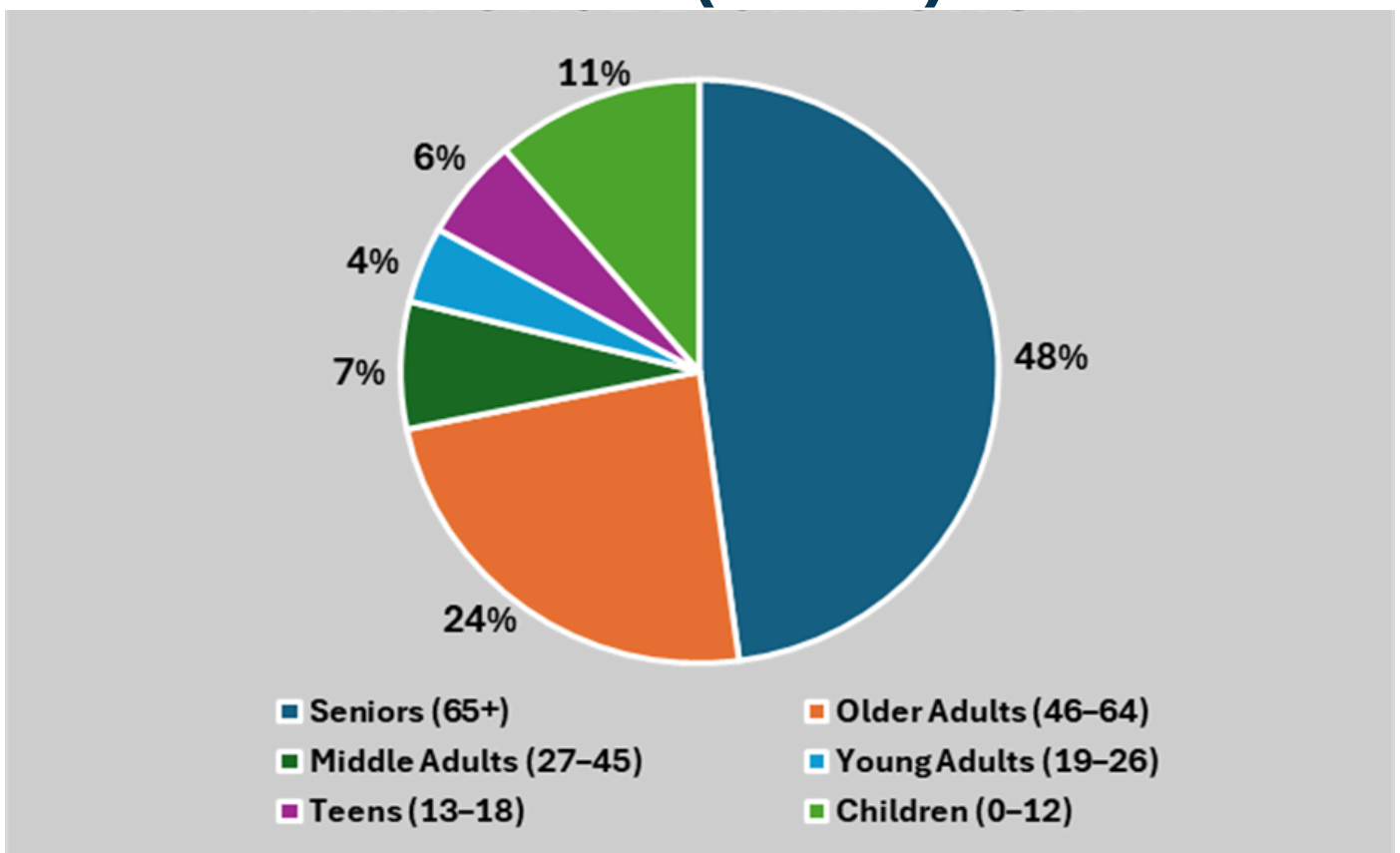


Table 1: Summary of Professional/Vocational Backgrounds of the Congregation

Profession	Distribution (%)
Retired	47.06%
Healthcare (e.g., nurse, physician, therapist)	11.76%
Other	11.76%
Education (e.g., teacher, professor, administrator)	7.84%
Business & Finance (e.g., analyst, accountant, manager)	5.88%
Information Technology (e.g. developer, IT support, data analyst)	3.92%
Student	3.92%
Public Service & Government	1.96%
Retail & Customer Service	1.96%
Skilled Trades (e.g., electrician, plumber, mechanic)	1.96%
Unemployed	1.96%

As evidenced from the information contained in the table above, our congregants come from a diverse background of professions and vocations. Although we have a high percentage of retirees in our congregation, many have backgrounds in healthcare, education, and finance. These diverse skills support the operational and administrative work that is important for the daily functioning and growth of our church.

Who We Are

Mission Statement

As a welcoming and caring Christian community, we prayerfully seek to share God's love and joy with everyone.

Our Vision

We seek to be a vibrant and welcoming Christian Community that nurtures spiritual growth, deepens relationships, and actively serves others. Guided by Christ, we envision:

- **A Church that Feels Like Home:** A caring and inclusive space where people of all ages and backgrounds feel they belong, are known, and are valued.
- **A Dynamic Worship Program:** Creating Worship experiences that inspire—whether experienced in person, streamed online, or shared afterward—so that the message of God's love can continue to grow beyond Sunday and reach even more hearts.
- **A Faithful Presence in the Lives of Youth:** Actively listening to the hopes and needs of our young people and supporting them as they grow in faith and life.
- **A Lifelong Journey of Learning:** Offering dynamic Christian Education for all ages that deepens biblical understanding, strengthens discipleship, and inspires renewed commitment to Christ.
- **A Community Rooted in Compassion:** Fostering a community of mutual care, where we actively listen to and support one another, living together in peace and harmony.
- **An Outward-Focused Mission:** Engaging in a visible responsive outreach program that meets the needs of our local community and extends God's love beyond our doors.
- **A Life of Integrated Faith:** Encouraging each person to live as a true follower of Jesus—where faith, worship, and daily life are fully connected.
- **A Growing, Vibrant, and Welcoming Congregation:** To grow as a vibrant diverse congregation, reaching out to all who seek to know and follow Jesus Christ, and providing a welcoming place for all to belong.

Our Values

At MWPC, our values shape who we are as a faith community and guide how we live out our mission and vision. We honour the history and legacy of our congregation while actively pursuing new ministries and opportunities for growth. Together, we are committed to fostering a community rooted in faith, unity, respect, and diversity. Our values reflect our hopes and dreams for today and the future.

Community and Inclusion

Our congregation is one where members are energized through joining together in the provision of an open, welcoming, and inclusive community. We are a church family that is built upon a foundation of diversity across ages, cultures, and interests. We strive to know, understand, and care for each other. New people are warmly welcomed and return because of the friendliness of our congregation and respect for all who attend.

The Power of Engaging Worship

Our Worship Service is at the heart of who we are as a Church. We encourage active participation from the congregation in all aspects of Worship including Scripture reading, music, and leading Services on special occasions. We value preaching that brings the timeless truths of the Bible into everyday contemporary life, inviting everyone to reflect, ask questions, and grow in faith. We celebrate music as a divine gift and an essential part of our Worship, embracing diverse styles that reflect our shared love of music and deepening our Worship experience. Our goal is to create a welcoming space where people of all backgrounds can explore God's word in a safe environment with open hearts and open minds.



Youth Engagement and Support

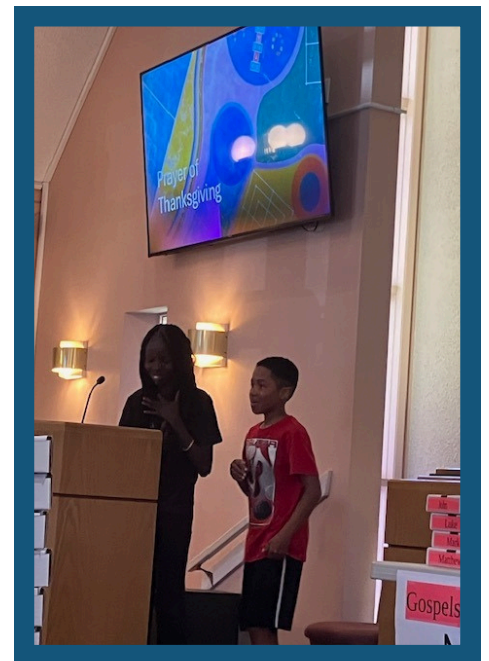
We are committed to nurturing the faith of our children and youth by actively integrating youth in church life and encouraging their spiritual development. Opportunities are available for participation in congregational activities and to attend national events such as Uplift. We encourage youth involvement and support them in their spiritual journey.

Inclusive Christian Education

We prioritize engaging, open, and age-appropriate Christian Education, with a strong focus on children. Our Sunday School and Youth programs are an integral part of our ministry. Children are actively encouraged to participate in Worship Services several times a year with presentations and music. We believe in creating a learning environment where programs value openness, acceptance, and are fun and meaningful for all.

Mission and Community Involvement

We care deeply about helping others and making a positive difference, both close to home and around the world. Inspired by Christ's love and compassion, we actively look for ways to serve our community through mission projects, volunteer work, and outreach projects. Our efforts include the provision of meals for local families, support for global relief efforts, and partnering with PWS&D, Presbyterian Sharing, and other organizations that bring hope and healing. We believe that sharing God's love through action is at the heart of our faith.



Groups and Programs – Our Service

Pastoral Care



Our Congregation cares for one another, responding with the love of Christ during all the seasons of life. The Pastoral Care and Visitation Team provides a listening ear, empathy, and aid during times of need, crisis, and significant life events. Our Caring Library has numerous resources available to the congregation. Our Pastoral Care Team organizes special social and educational events for the Congregation. We also have a greeting card program and a prayer circle.

Pastoral care is also provided in a more casual way through conversations on Sunday morning and during Fellowship time. We believe it is important to support those who are unable to attend Worship Services. This support includes phone calls and pastoral home visits. We provide compassionate support for those at any stage of life. Beyond caring for our congregation, we also strive to provide support to the local community around us. The Congregation looks forward to future opportunities to provide pastoral support to our community.



Caring Library

Children Education and Youth Ministries

The Christian Education committee oversees Sunday School, mid-week and summer activities for church and neighbourhood children and youth. We also provide occasional "Lunch and Learns", Confirmation Classes as required, and adult Bible studies.

Hybrid Adult Bible Study



Mill Woods Presbyterian Church offers Sunday School classes from grades 3 through 11, but are able (on a moment's notice) to offer a class for younger children. The average weekly Sunday School attendance is 8 children.

The Sunday School is a joyful part of our congregation. The children perform a Christmas pageant and an end of year presentation in June for the congregation. Music is an integral part of the Sunday School and volunteer musicians lead the children in songs. Some Sundays the children share their talents and messages with the congregation during Worship. Teachers and support staff are supported by a volunteer Superintendent. We continue Sunday School through the summer with volunteer teachers when available.

Table 2: Sunday School

Age Group	Attendance	Curriculum Used	# of Teachers
Grade 7 and under	Registered 14 (average weekly attendance = 4)	Spark Lectionary	3
Grade 8 and over	Registered 16 (average weekly attendance = 4)	Reformation Press	3



Kid's Club



Sunday School

Kid's Club—for church and neighbourhood children—meets once a week throughout the school year for games, a snack, a Bible story, and crafts. Youth Group Supper Club—for church and neighbourhood youth—meets monthly for a meal, Bible study, and games.

Youth of the congregation are frequently given the opportunity to attend the Presbyterian Youth gathering—this year called The Collective.

For over two decades we have hosted a week-long Vacation Bible School in August. On average, we have an enrollment of 30 kids, supported by several teen volunteer helpers. In 2025 we also hosted a week-long "Peace Camp" for the teens themselves where the focus was on social justice and community needs.

MWPC hosts two or three adult Bible studies per year. A few times each year there is a "Lunch and Learn" after the Service.

Vacation Bible School



Mission

Our congregation has engaged in prayerful discernment and ongoing conversations about the direction of mission within our church. Recently we redefined how church committees can collaborate to identify mission projects, partnerships, and opportunities for the congregation, as well as to make recommendations for the allocation of mission-related funds throughout the year.



The congregation continues to generously support the work of Presbyterian World Service & Development (PWS&D), including responses to a variety of national and international disaster relief efforts. We are also seeking ways to deepen our awareness of mission opportunities and needs within the local community, and to better coordinate congregational action to address those needs.

Although meeting our annual budget remains a challenge, we gratefully acknowledge the generosity of members and adherents who support people both within and beyond our immediate church community. Contributions to PWS&D appeals have been significant, and the congregation faithfully meets its Presbyterian Sharing commitment (current allocation: \$13,000 per year).

We strive to serve our wider community through a variety of mission activities and projects; these include a Mitten Tree during Advent Season for those in need, donations to the Food Bank (and the provision of volunteer hours at the Food Bank depot warehouse), and directing funds from our White Gift Sunday and Christmas Eve Services to local mission initiatives.

A Legacy Fund was created from a portion of the proceeds of the sale of the Strathcona Church building when the two congregations amalgamated. Each year, donations from the Legacy Fund are distributed. The Legacy Fund committee meets annually to identify charitable organizations and projects that will receive support.



School Supplies and Mitten Tree

Worship Life

Worship Services involve people of the congregation reading Scripture, offering special music, and sharing in prayers. We value thought-provoking contemporary sermons.

Music is highly valued in our Services. We appreciate variety and receive musical offerings with enthusiasm. Currently our regular Sunday Service praises with organ, grand piano, and voice. Throughout the year the choir periodically shares anthems and helps lead congregational singing.

The congregation values youth participation in Services. We have recently engaged our youth to read the Psalm during our main Service. Our youth also lend their support when the Sunday School shares music and art, and when we engage in “all-ages” Worship Services (≈ 4 times/year).

Our congregation takes pride in coming together as a welcoming and inclusive community. Each week following our Sunday Service we enthusiastically engage in Fellowship time (over a cup of coffee/tea and biscuit/sandwich) to strengthen the connections among our church community and to celebrate the richness of our diversity across age groups, ethnic/cultural backgrounds, and interests.

Table 3: Worship Attendance

Average Weekly In-Person Attendance at Sunday Worship	Average Weekly Online Attendance at Sunday Worship via Zoom
60	5

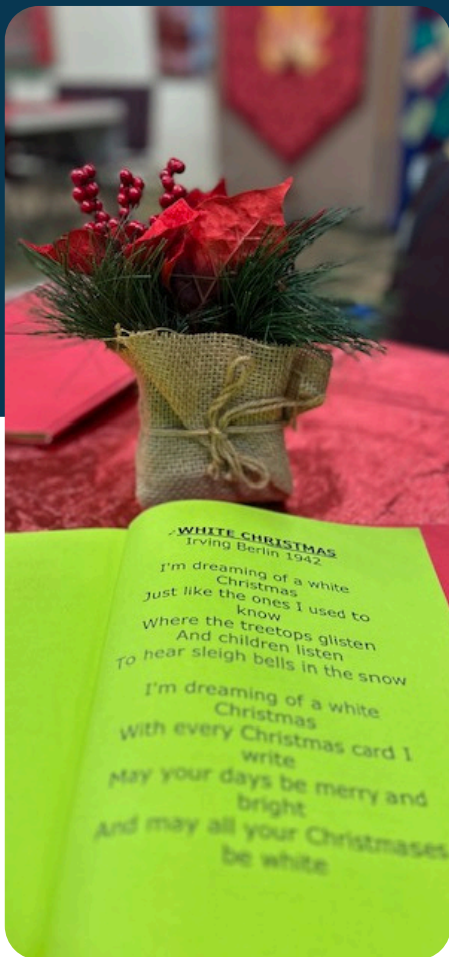
Recordings of our Services are shared with the congregation by email every week. Other Services throughout the year include Shrove Tuesday, Maundy Thursday, Good Friday, Outdoor Easter Sunrise, Blue Christmas, and Christmas Eve Candlelight Service.

Ladies Guild

The MWPC Ladies Guild has provided service and support to both church and community for decades. The group currently has nine members and meets nine times per year. They have two or three fund-raising activities each year, including the Jingle Bell Bazaar where they enjoy welcoming both the neighbourhood community and our church family. Prices are set with an awareness of community needs. Over the years the Ladies Guild has contributed to various improvements in the church, most recently overseeing the kitchen renovation and contributing to new flooring in the lower hall of the church. Their November meetings are special because that is when they choose various charities to support. Most funds raised each year by the Ladies Guild are shared with organizations such as the Edmonton Food Bank and PWS&D Gifts of Change.

Session

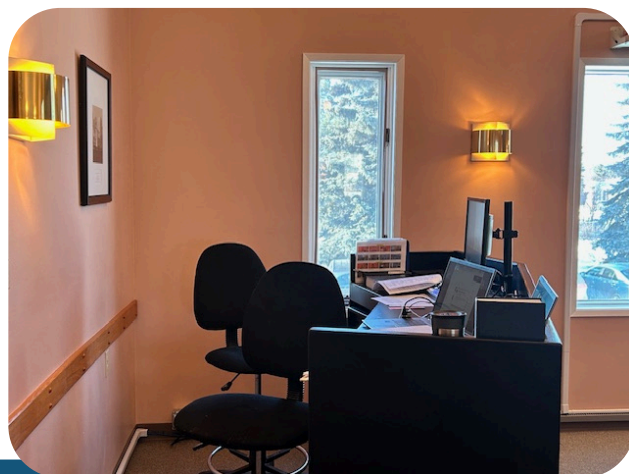
The Session is active in providing ministry through personal and pastoral care, sharing in fellowship, and mutual support. The Elders and the Minister work together as a team to respond to the needs of the individual members of their districts. Session meetings are typically held 8–9 times a year on the first Tuesday of the month. Session engages in ongoing Elder/Leadership development.



Building and Property

As mentioned previously, our current church building was opened in 1986; it is a beautiful building with an exterior of Terra Cotta stucco with wood accents. We fondly refer to it as the little pink church on the corner. Continual efforts are made by the congregation to maintain the upkeep and appearance of the building and grounds. This includes an annual "spring clean" when people in the congregation gather to tackle various cleaning jobs both inside and outside the church building. Recent exterior work has included exterior painting and landscaping to improve the drainage around the building. We have removed trees and trimmed others to maintain a pleasant appearance. The parking lot was completely redone with new pavement and improved drainage. We have an area that is deemed overflow parking where we can accommodate extra vehicles when we have larger events.

The interior of the building has not been neglected and has seen its share of recent improvements. In 2020 the kitchen was completely renovated with new cabinets, flooring, and appliances. In 2021 we replaced the flooring in the lower hall and entrance way. In 2021 we also installed our new Audio/Visual system which allowed us to use Zoom video-conferencing during the COVID pandemic to stay connected as a congregation. With the addition of the new A/V system we now livestream and record church events/Services. This has also been a great outreach tool allowing people who are outside of our church to virtually-attend our services and see what MWPC is all about. In 2024 we replaced our aging furnaces with high-efficiency models and added air conditioning to the sanctuary and main floor which makes working in the office and attending Sunday Service a more comfortable experience in the heat of summer.



We have an active and energetic Board of Managers. The Board has overseen efforts to improve the accessibility of our building for people who have mobility challenges. A new concrete ramp was poured to ensure ease of access to the main door of the church, and accessible parking stalls were included in our recent parking-lot upgrade. An internal single-seat chair lift has been installed to facilitate the ease with which people can move between the upper (i.e., main) and lower levels of the building. All washrooms in the church are easily accessible, complete with grab bars. The Audio/Visual system in the sanctuary has compatibility to accommodate different types of hearing aids, thereby improving the “listening experience” of people with hearing impairments who attend our church Services.

The sanctuary can accommodate up to 150 people; our lower hall can accommodate up to 100 people for special gatherings. In addition to the sanctuary, the main floor of the church has an office for the Minister and a second office where administrative duties are conducted. The lower level of our church building has a full kitchen and two meeting rooms that act as Sunday School classrooms.

As with many churches, we are not without budget challenges and are constantly looking for additional revenue streams. On occasion we rent out space in our building to different organizations; this is a joint effort between Session and the Board to ensure that we are protecting the building and property while following the PCC Leading with Care policy. As a result of being situated within walking distance of a major Edmonton hospital—the Grey Nuns Hospital—and other professional businesses, we offer parking rental opportunities to those who are interested.

Although small in number, we are blessed to be part of a congregation of “cheerful givers.”

”
“The point is this: whoever sows sparingly will also reap sparingly, and whoever sows bountifully will also reap bountifully. Each one must give as he has decided in his heart, not reluctantly or under compulsion, for God loves a cheerful giver.”
(2 Corinthians 9:6-7-NRSV)

“

Financial Profile

As mentioned previously, in September 2014 the newly formed Mill Woods Presbyterian Church was established through the amalgamation of the former Mill Woods Presbyterian Church and Strathcona Presbyterian Church. As a result of selling the Strathcona Church property to a local developer, the congregation realized proceeds of approximately \$1.3 million which was invested to support the ongoing financial needs of the congregation and its mission work. Despite drawing money from the invested funds (to support various projects and cover different expenses), the overall value of our investment principal has remained quite stable since amalgamation.

Mill Woods Presbyterian Church is managing resources responsibly and sustainably with steady support from its congregation and careful expense control.

Financial Statements for 2024

Income from		Expenses	
Offerings/Gifts	<u>\$149,821</u>	Operating Expenses	<u>\$217,918</u>
Investments	<u>\$164,310</u>	Debt Payment	<u>\$ nil</u>
Rentals	<u>\$8,645</u>	Benevolences(1)	<u>\$37,487</u>
Other	<u>\$10,025</u>	Other	<u>\$ nil</u>
Total Income	<u>\$332,801</u>	Total Expenses	<u>\$255,405</u>

APPROVED BUDGET for 2025 \$214,604

"PRESBYTERIAN SHARING" ... ALLOCATION	Requested	<u>\$16,334</u>
	Accepted	<u>\$13,000</u>

(1) Presbyterian Sharing, Synod, Presbytery, WMS, PWS&D

Ministry at Mill Woods

Pastoral Skills and Interests Inventory

In the fall of 2025, the Search Committee sent out surveys to the members, adherents, and children of Mill Woods Presbyterian Church. We received 71 responses (\approx 50% response rate). Members and Adherents were asked to complete an Inventory of Pastoral Skills and Interests across 12 areas of interest. Each area of interest was ranked from highest importance (rank = 1) to lowest importance (rank = 12). The table below shows the overall mean/average-rank of each area.

Table 4: Pastoral Skills and Interests Rankings

Pastoral Skill and Interest	RANK.AVG
1. Leading Worship and Preaching	2.78
2. Attentive to the programs and needs of children and youth.	2.78
3. Christian Education (for all ages and stages)	4.25
4. Pastoral Care and Crisis Support	4.38
5. Innovative Leadership (Organizational abilities, technical skills and adaptability)	5.77
6. Personal and Spiritual Development (Providing resources and guidance for people's devotional lives; and for prayer groups, retreats, and other small group experiences.)	6.33
7. Leadership Development (Planning for and sharing in the training of leaders for church programs)	6.37
8. Supporting Seniors	6.85
9. Community Engagement	6.92
10. Stewardship (Faithful use of our time, spiritual gifts) and money in response to God's generosity.)	6.97
11. Mission and Outreach (including evangelism and social justice in the community, the country and the world)	7.02
12. Ecumenical and Interfaith Engagements with other denominations and faiths.	9.2

Feedback from our Children

Congregational Children's Survey

At MWPC we love children and value their opinions. We created a simplified version of our congregational survey to give children under the age of 12 a voice in our survey process. We received eight surveys; the descriptive narratives below summarise the key comments our children made about their church:

All the children said that they feel welcome at church, and that the people of our church care a lot about each other and the community.

When asked about the three best things about our church, several children mentioned the music and the people.

Children were given eight options for the Pastoral Skills and Interests section from which they chose four, in no specific order. Leading worship had the most votes, followed by helping the community. Christian education and visiting the sick were next. As we imagined, spending time with kids was also a popular choice.

It is encouraging to see that the children feel loved and cared for in our midst and that their impressions of the church family concur with the views of the adults.



Minister's Position Description

A Full Time Minister of Word and Sacrament at Mill Woods looks like this:

- A Worship Leader who will, through meaningful and creative Worship, thoughtful and challenging sermons, and engaging prayers, strengthen the congregation's relationship with God and encourage us to grow in faith and understanding. A Worship Leader who will explore more Intergenerational Worship opportunities through engagement of youth, musical diversity, and congregational participation.
- A Minister who will support, encourage, and be attentive to our robust programs for children and youth.
- A Minister who, along with the Elders and our Pastoral Care Team, provides us with spiritual care and is ready and able to support us in times of crisis.
- A Minister who has good organizational skills, is familiar with technology, and is open to new and novel ideas.
- A Teacher who will help guide us on our spiritual journey through study, reflection, prayer, and group/retreat experiences.
- A Leader who will encourage others to lead and will, with others, train, mentor, and coach them.
- A Minister who will seek to understand the unique needs of seniors and provide them with spiritual support and care.
- A Minister who engages with and seeks to understand the diverse community we serve and looks for opportunities to build relationships and collaborate with organizations and other faith groups.

- A Minister who challenges and encourages us to give of our time, talents, and treasure for our church, the community, and the world.
- A Minister who, by word and example, calls all of us to share the Good News of the Gospel through our actions and our commitment to God's ways of justice and grace.
- A Team Player who will, with leaders and others, build on the strengths of our church and look for new opportunities for growth.
- A Visionary who aligns with our goals, vision, and mission.
- **Finally: A Minister who will be an integral part of our wonderfully diverse congregation. We are young and not so young. We are multi-cultural. We are grace filled, accepting, and we seek to love as we are loved by God.**

Compensation

Stipend:

Negotiable - based upon the minimum stipend outlined in the stipend and allowance schedule, commensurate with experience.

Additional Benefits

- Accommodation and utility allowance
- Travel Expenses
- Continuing Education Allowance (+ Books)

Additional Positions within our church

Name	Role	Full or Part-Time
Joyce Seerattan	Organist/pianist	Sundays & other services
Lydia Calder	Cleaning	Part time

Previous Ministers

Minister	Dates Served
Rev. William & Christine Ball	2017-2025
Rev. Jean E. Bryden	2014-2017

How long has the position been open?	As of September 28, 2025 following the retirement of the ministry team
By whom was the position last filled?	Rev. William & Christine Ball

About Edmonton

Edmonton, Alberta's capital city, is home to over 1.2 million people(2) . The city has a strong economy with energy, construction, government services, and entrepreneurship forming the backbone. Our City Council works toward balancing the needs of the business community and the local residents, as well as trying to improve the lives of those in need.

Edmonton is one of the most affordable places to live in Canada. Over 375 mature and new neighbourhoods allow residents to choose a home that fits their family's lifestyle and budget. Twenty-one public libraries and 20 recreation centres offer programs in all parts of the city. The public transit system includes buses, LRT (Light Rail Transit), and DATS (Dedicated Accessible Transit Service). In the fall of 2023, the city opened its new **LRT** line (the Valley Line)—with a station close to our church—thereby improving city wide accessibility.

The city's 160 community leagues are unique to Edmonton and almost every residential neighbourhood has one. Begun in 1917, they are volunteer-run, non-profit societies that provide recreational spaces and activities. They also represent residents on local matters and are officially recognized by the city council. Edmontonians are committed volunteers and support thousands of not-for-profit agencies.



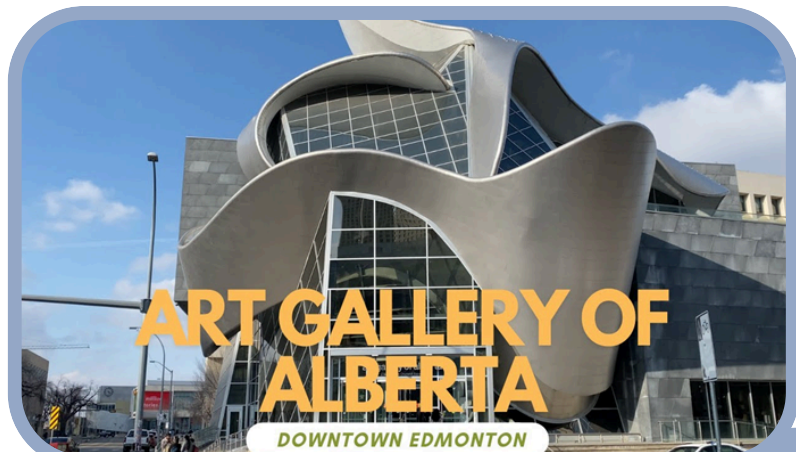
The Valley Line LRT- Grey Nuns Station.

<https://exploreedmonton.com>

(2)<https://regionaldashboard.alberta.ca/region/edmonton/population/#/?from=2021&to=2025>

Sports are big in Edmonton. Residents rally around the local teams, and cheer on the world, hosting international events and world championships. Evolving in the centre of downtown is ICE District: 25 acres of office, retail, entertainment, living space, and Rogers Place—home to the Edmonton Oilers hockey team.

For those who enjoy the great outdoors Edmonton has over 400 neighbourhood and city parks, including the North Saskatchewan River Valley which has 160 kilometres of trails. Edmonton is approximately 3½ hours from Jasper National Park and 4 hours from Banff National Park; there are also a dozen provincial parks in the area.



<https://www.youraga.ca>

In recognition of its commitment to arts and heritage, Edmonton was officially designated a Cultural Capital of Canada by the federal government in 2007. The city was recognized for its thriving music and arts scene, numerous festivals, and commitment to integrating arts and culture into community life. Notable institutions like the Art Gallery of Alberta, the Citadel Theatre, the Winspear Centre, and the Northern Jubilee Auditorium play a key role. The Edmonton Symphony orchestra has a world-renowned reputation and Broadway Across Canada stages several shows each year.



<https://www.rogersplace.com>

There are many activities for children and families. The Telus World of Science, Fort Edmonton Park, and the new Royal Alberta Museum are fun and educational. Summer attractions include the street performers' festival, a family arts festival, and K-Days. Winter offers Silver Skate, a Byzantine Winter Festival, and snow sculptures. And, of course, there is West Edmonton Mall, with Galaxyland amusement park and an indoor water park.

Edmonton has both public and Catholic School systems, which together serve approximately 170,000 children. Over 95,000 students attend the city's six publicly funded post-secondary institutions and private training schools. The University of Alberta is the province's flagship university—one of the top five research universities in Canada, and among the top 100 in the world. The university attracts more than \$500 million annually in external research funding and is home to some of the world's top researchers in engineering, medicine, dentistry, earth sciences, and virology.

<https://www.fortedmontonpark.ca>



Multi-culturalism contributes to the city's diversity and vitality. Edmonton is home to Canada's second largest urban Aboriginal population as well as 50 international cultures and 70 unique ethnic groups. On the August long-weekend the diverse cultures of our community are celebrated through the Heritage Festival—the world's largest 3-day multicultural celebration.



<https://buzzbishop.com/travel/galaxyland-at-west-edmonton-mall/>

Mill Woods

Our church is located in the area known as Mill Woods, which has a population of about 80,000 people and is primarily middle class and multi-ethnic, boasting an estimated 21 places of worship. The immediate neighbourhood surrounding MWPC is called Kameyosek and is one of 26 communities in Mill Woods. Located near the centre of Mill Woods, Kameyosek contains a mixture of land uses and dwelling types. The church is within walking distance of a major hospital and a recreational complex. There is a shopping centre nearby as well as a large, modern library which is also home to the Mill Woods Seniors Activity Centre.

Our Final Message



Source: [https://commons.wikimedia.org/wiki/File:Edmonton_Skyline_from_106_Street_Lookout_2019.jpg]

Edmonton is recognized as one of Canada's sunniest cities, enjoying approximately 325 days of sunshine each year. This sunshine is a reflection of the warmth, love, and joy that shines within our Mill Woods church family, sustaining us in our daily efforts to follow God's Holy Word.

